

Alexandra Staub
The All-American Dream Moves to Germany:
Housing after World War II

Illustrations

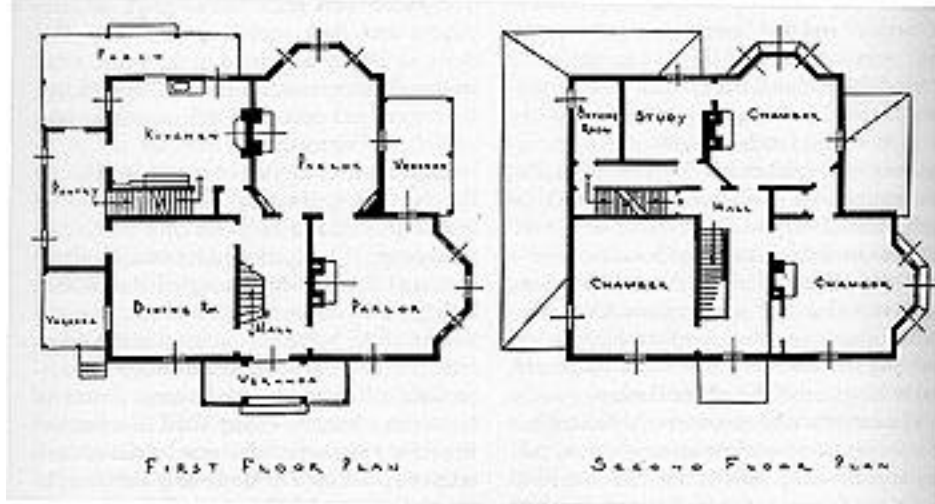


Illustration 1: Harriet Beecher Stowe's House (1871)

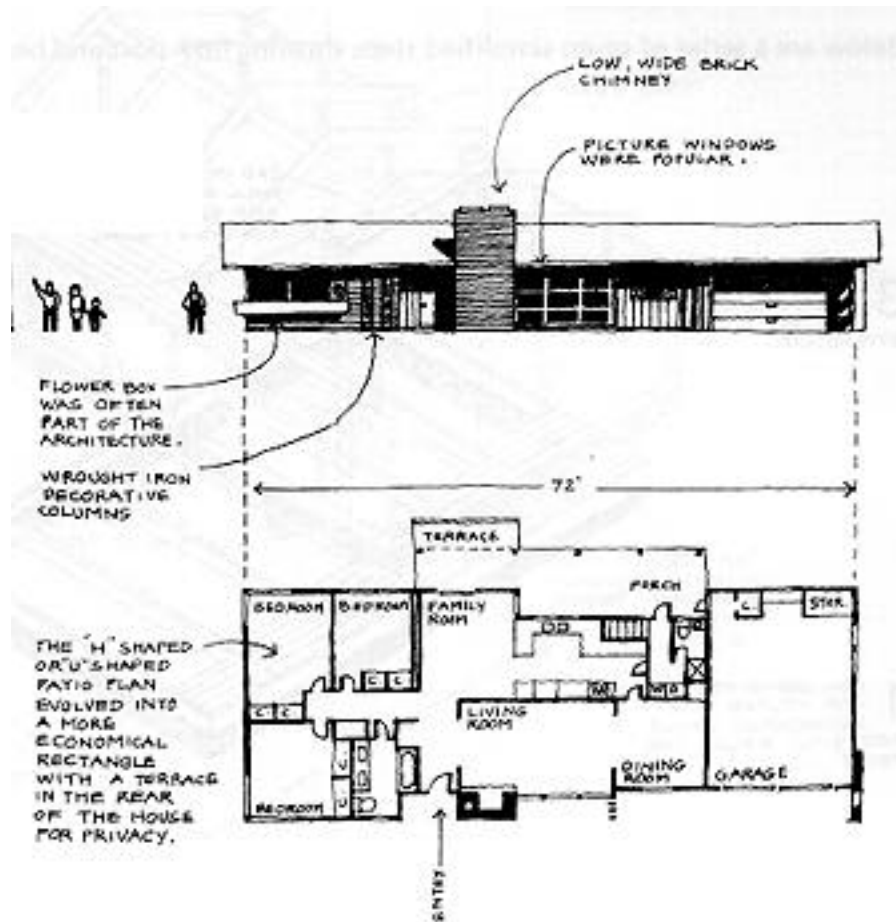


Illustration 4: American "Ranch House" (1950s)



Illustration 5: Goethe's Garden House in Weimar (late 16th or early 17th century)

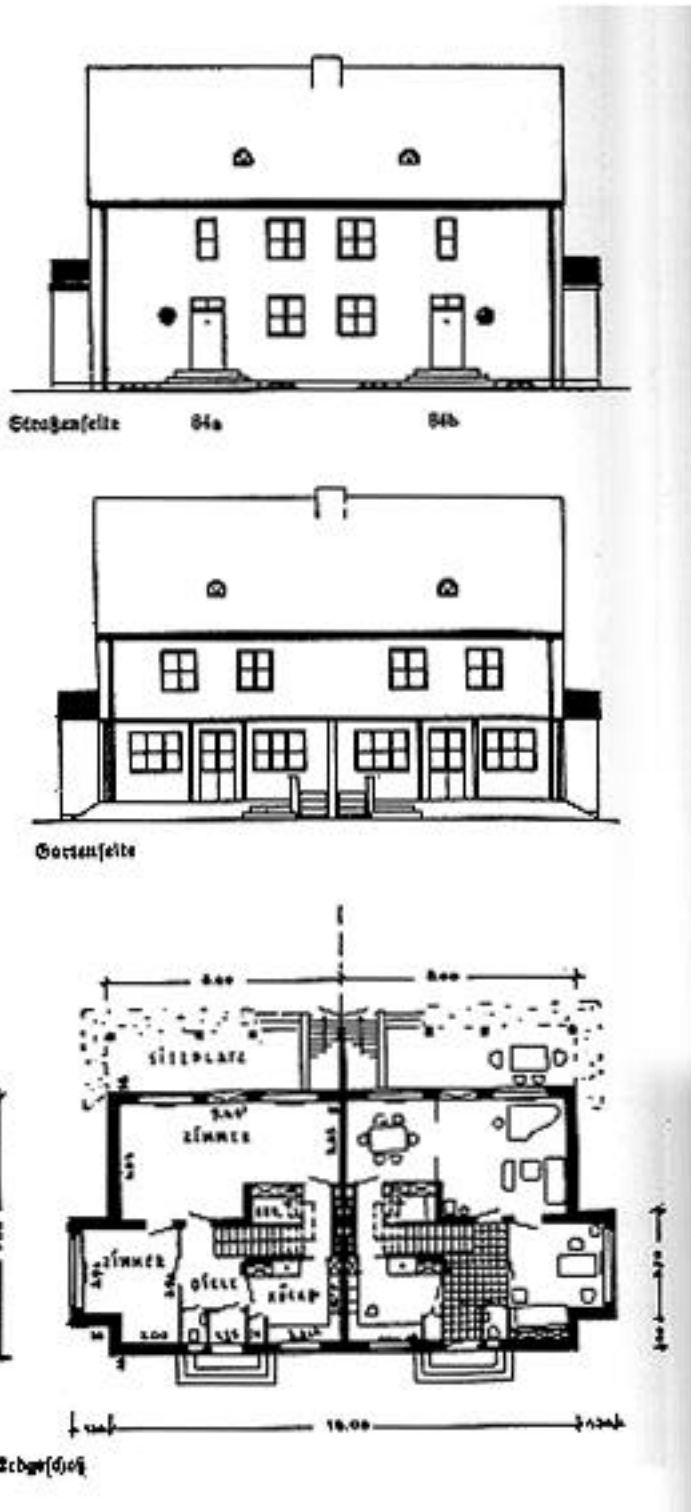


Illustration 6: House Am Fischtal, Berlin (1927-8) Arch.: Hans Gerlach

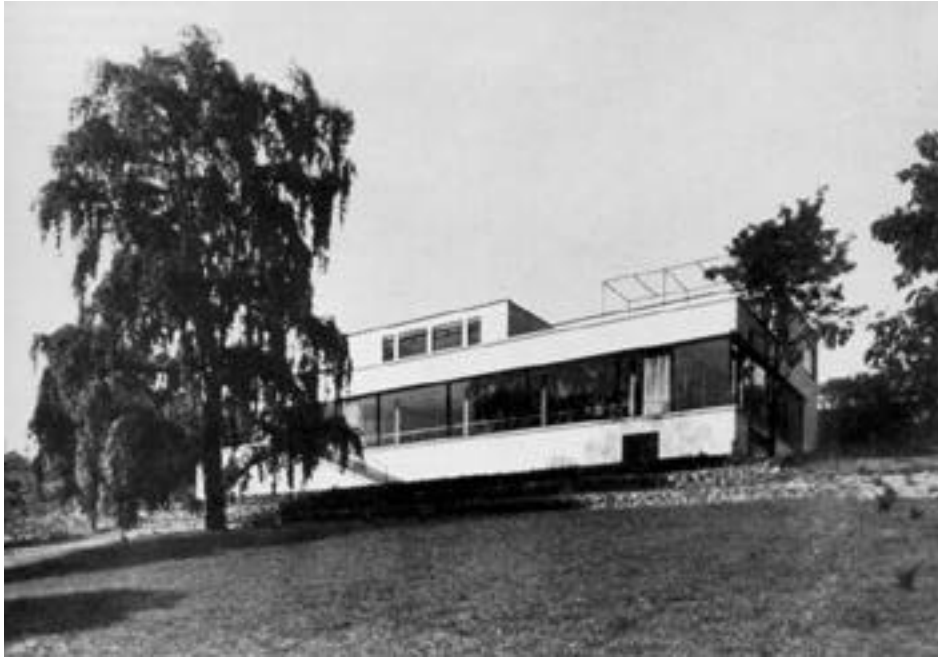


Illustration 7: Tugendhat House (1928) Arch.: Ludwig Mies van der Rohe

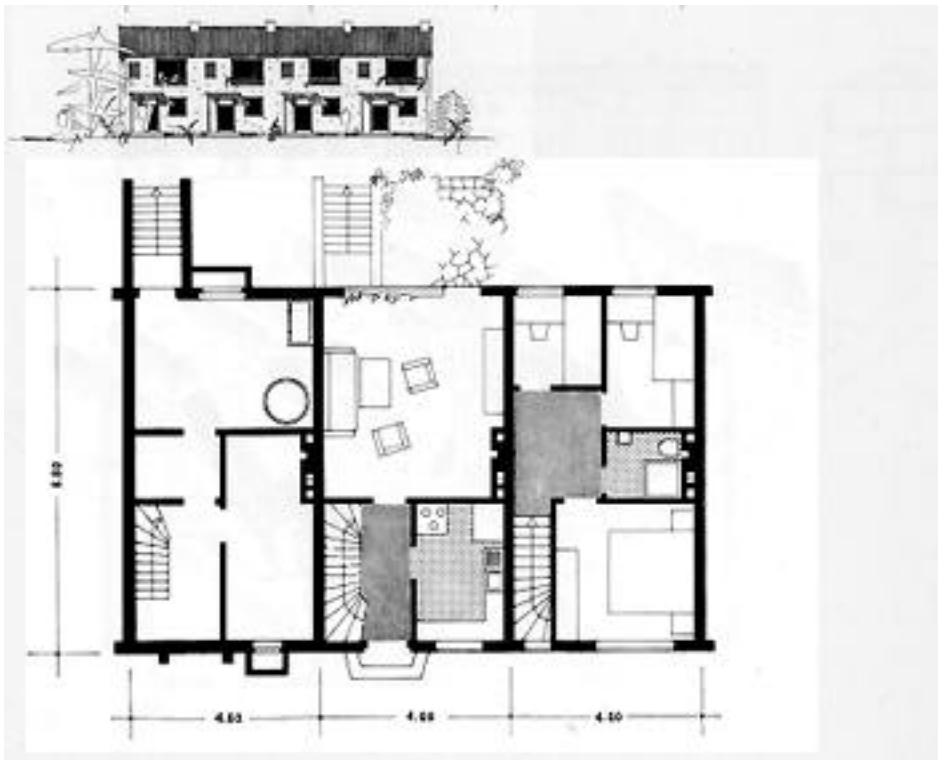


Illustration 8: ECA House in Aachen (1952) Arch.: Horst Loy, Alfred Schwelm

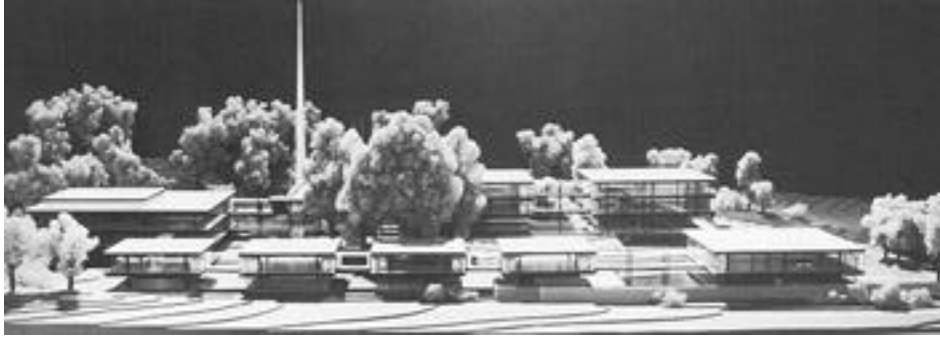


Illustration 9: German Pavillion at the World Fair 1958, Arch.: Sep Ruf and Egon Eiermann



Illustration 10: Chancellor's Bungalow in Bonn (1963-4) Arch.: Sep Ruf