

The Instructions for the process of how ISI Web of Knowledge Web Services is working with ScholarWorks

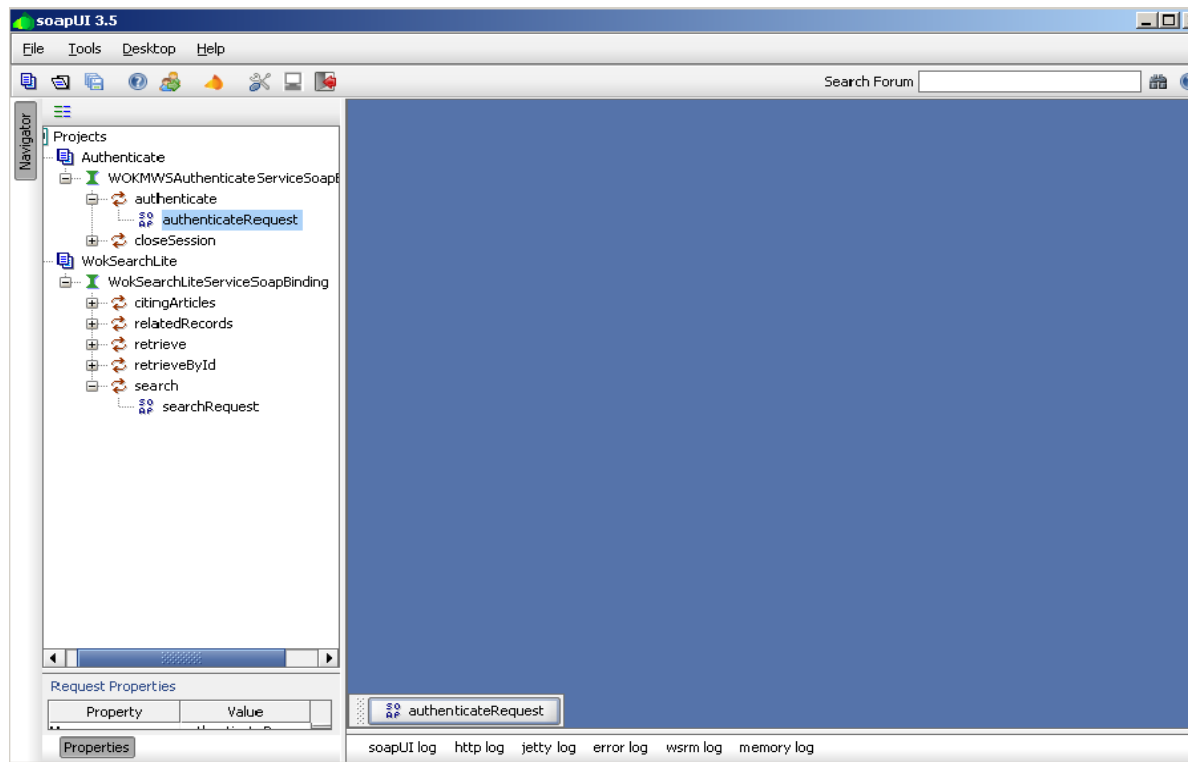
This guide is for anyone who wishes to set up a Web services client to access the ISI Web of Knowledge Web Services, version L1.0, extract data, convert data and import to ScholarWorks. The content includes basic information and several instructions for web services setup, data exporting, converting and importing.

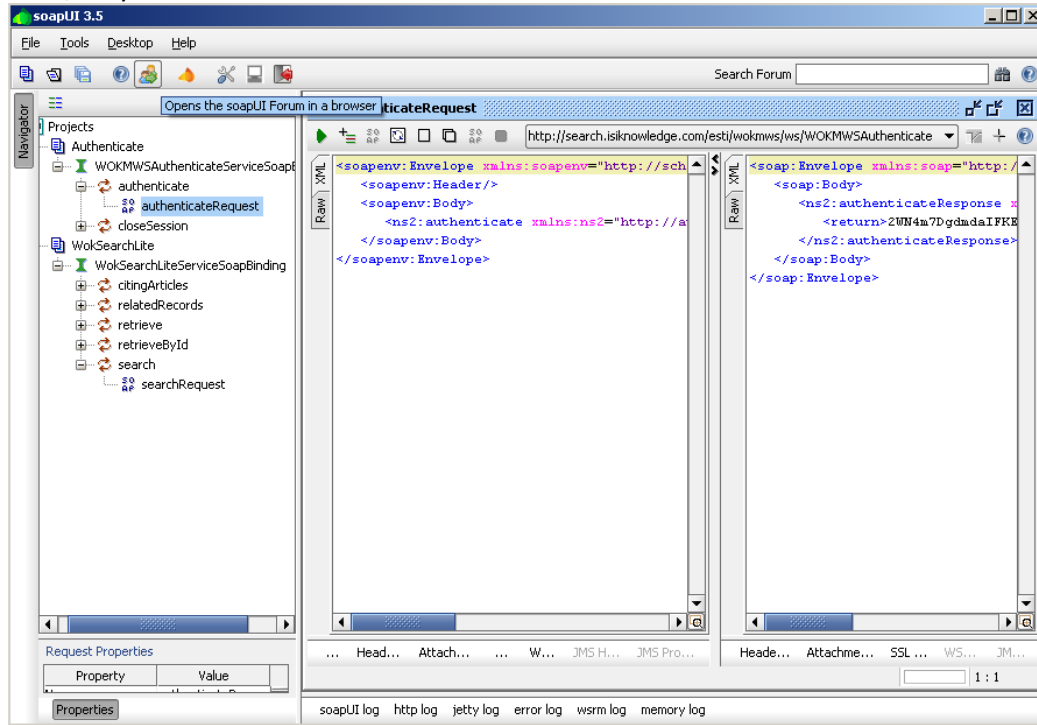
Web Services serve as ways to populate the institutional repository by exporting the citations data (UMass Amherst Faculty) programmatically in XML of Web of Science, converting Thomson Reuters XML format to Digital Commons XML format using XSLT Stylesheet, and batch importing to ScholarWorks. The whole process includes four steps: set up first, then export data, convert data, and import data.

Instruction for Web Services Setup

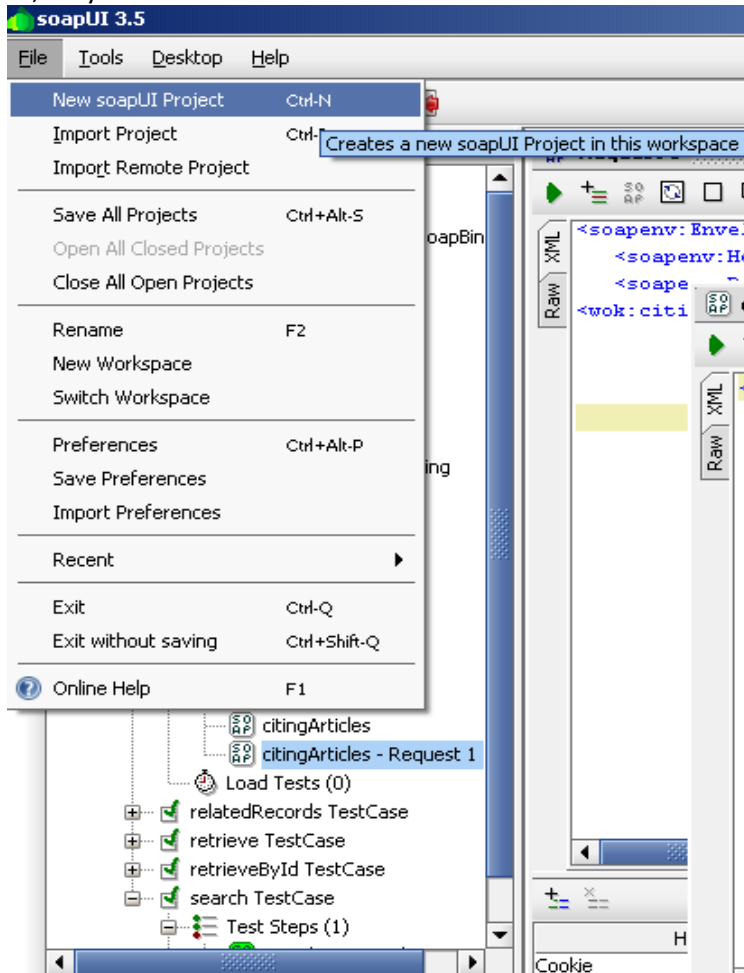
1. SoapUI (<http://www.soapui.org/>)

- Open Source Software (Free to download)
- High quality Web Service Testware
- More details on “Get Started” tab
- Look and feel of soadUI. See the work space and request/response windows.

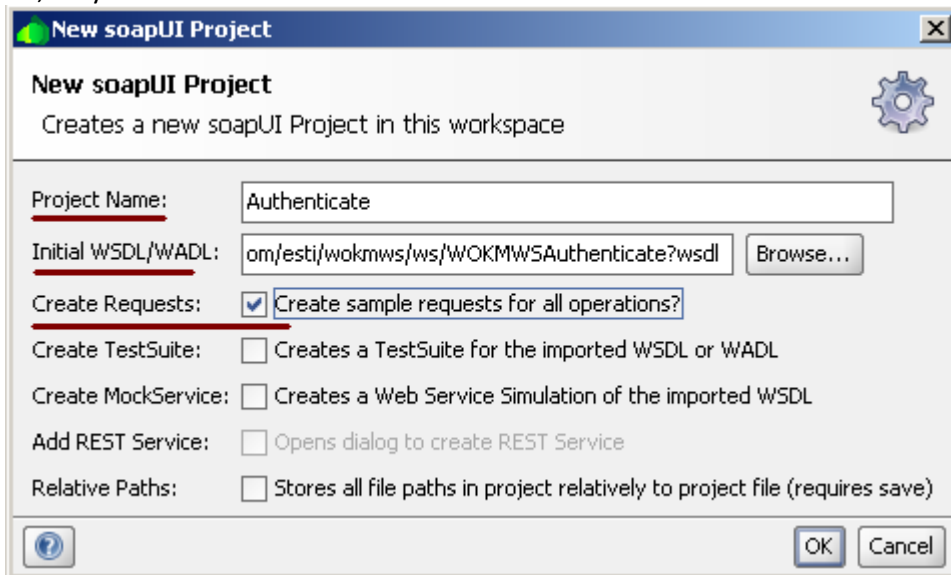




2. Install SoapUI
3. Create two new Web Services projects
 - File->New soapUI Project



- Project Name: **Authenticate**; Initial WSDL/WADL: Authenticate service endpoint address: <http://search.isiknowledge.com/esti/wokmws/ws/WOKMWSAuthenticate?wsdl>
- Check off the first item "Create Requests"
- Click "OK"
- The same steps for another project; Project name would be: **WokSearch** and Initial WSDL/WADL would be WokSearchLite service endpoint address as <http://search.isiknowledge.com/esti/wokmws/ws/WokSearchLite?wsdl>

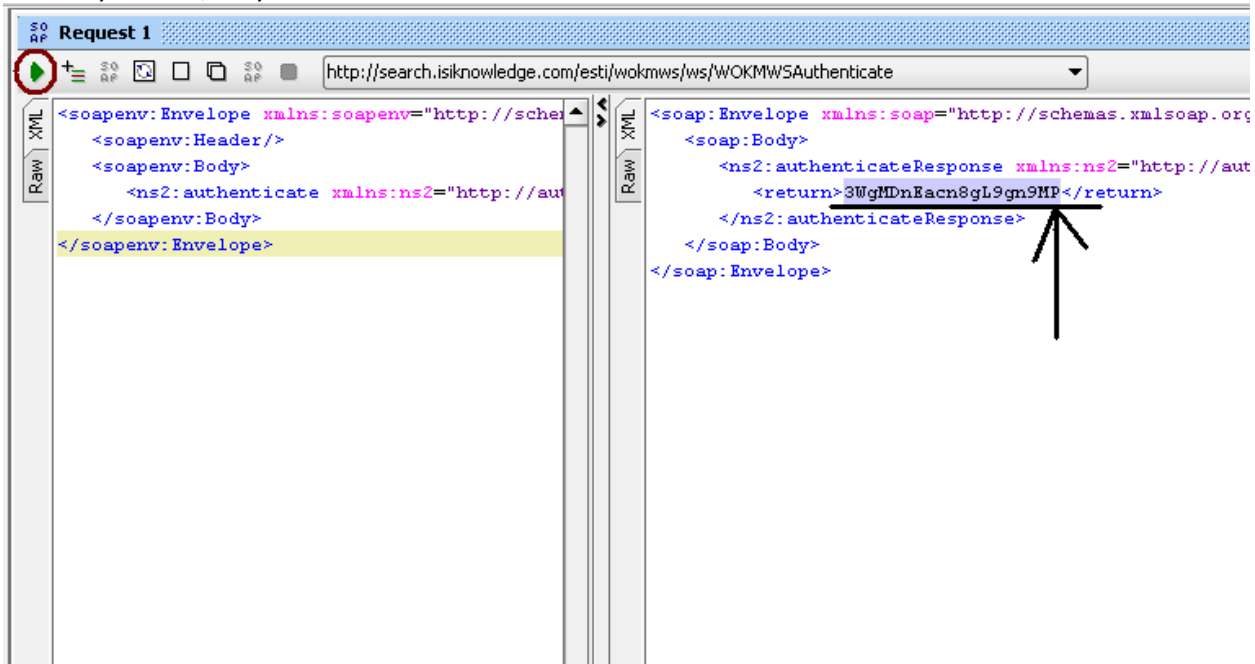


4. Authenticate operation

- Expand the project until you see “authenticate” and “closeSession”
- Click “authenticate Request 1”, you will see two windows (request (right) and response (left)) in work space.
- Copy the following code and paste into the “request window”

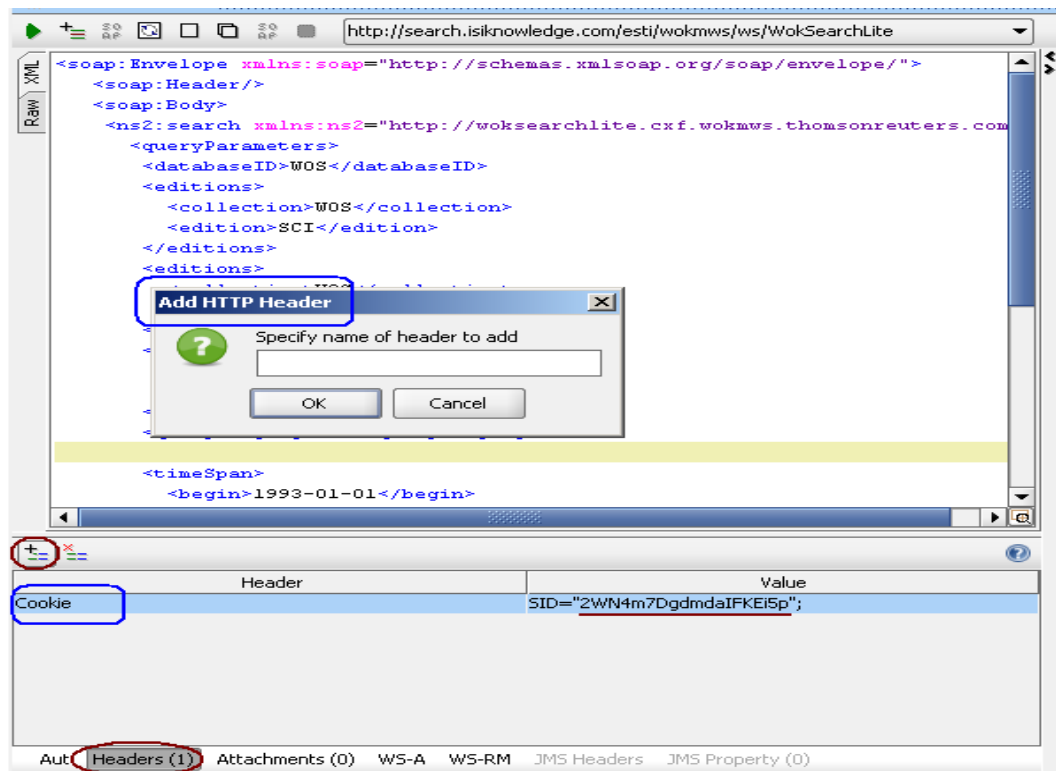
```
<soapenv:Envelope xmlns:soapenv="http://schemas.xmlsoap.org/soap/envelope/"
xmlns:auth="http://auth.cxf.wokmws.thomsonreuters.com">
  <soapenv:Header/>
  <soapenv:Body>
    <ns2:authenticate xmlns:ns2="http://auth.cxf.wokmws.thomsonreuters.com"/>
  </soapenv:Body>
</soapenv:Envelope>
```

- Click the **Green Triangle** to submit the request to the server. Then you will get response into the window on the left. A series number is your key (Session Identifier) to do search later.



5. Web of Knowledge Search Operation

- First, include "Session Identifier" into the Request Header.
 - (1) Expand "search" and double click "Request"
 - (2) Add "Session Identifier" in the cookie. (All further requests sent to WOK Web services must include the SID cookie.) Click "Headers" and the symbol . Add name of Header as "Cookie", and put "SID="2WN81505A6bEjO9Le2o"; Version=1;" in the Value field. Notice: Session Identifier will be put as the SID Value (take a look at the manue)



- **Write the request for search.**

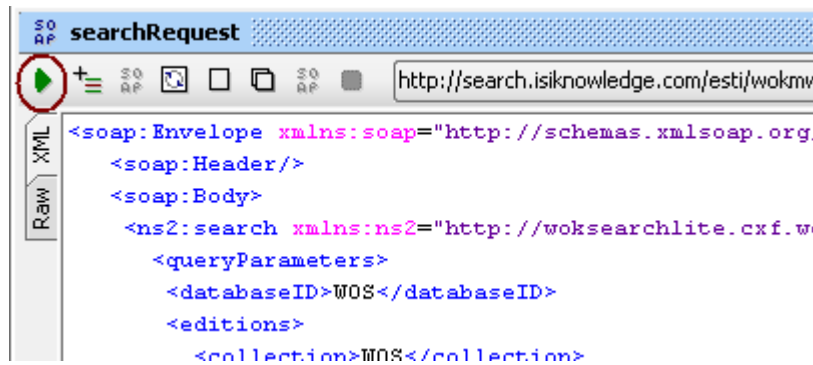
```
<soap:Envelope xmlns:soap="http://schemas.xmlsoap.org/soap/envelope/">
  <soap:Header/>
  <soap:Body>
    <ns2:search xmlns:ns2="http://woksearchlite.cxf.wokmws.thomsonreuters.com">
      <queryParameters>
        <databaseID>WOS</databaseID>
        <editions>
          <collection>WOS</collection>
          <edition>SCI</edition>
        </editions>
        <editions>
          <collection>WOS</collection>
          <edition>ISTP</edition>
        </editions>
        <queryLanguage>en</queryLanguage>

        <timeSpan>
          <begin>1980-07-01</begin>
          <end>2010-06-30</end>
        </timeSpan>
        <userQuery>OG=Univ Massachusetts AND CI=Amherst AND AU=Malone, M*</userQuery>
      </queryParameters>

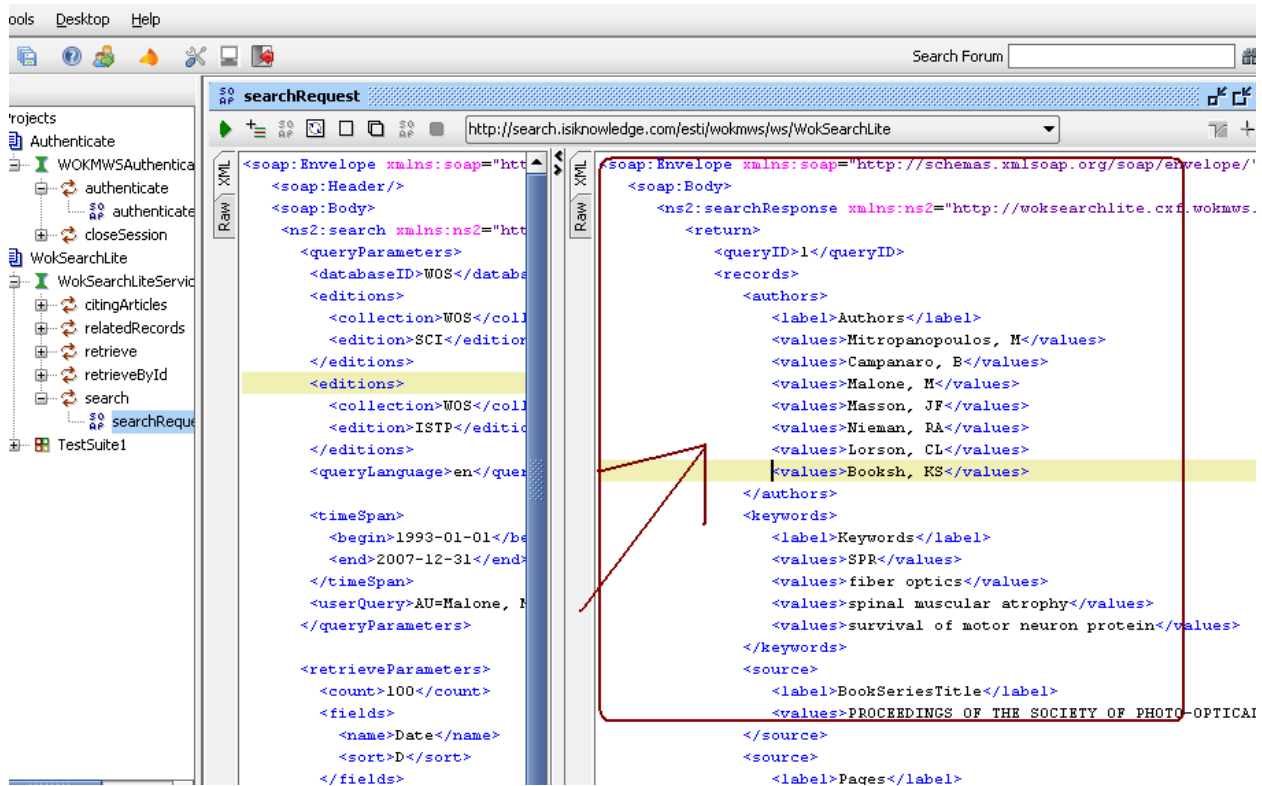
      <retrieveParameters>
        <count>100</count>
        <fields>
          <name>Date</name>
          <sort>D</sort>
        </fields>
        <firstRecord>1</firstRecord>
      </retrieveParameters>

    </ns2:search>
  </soap:Body>
</soap:Envelope>
```

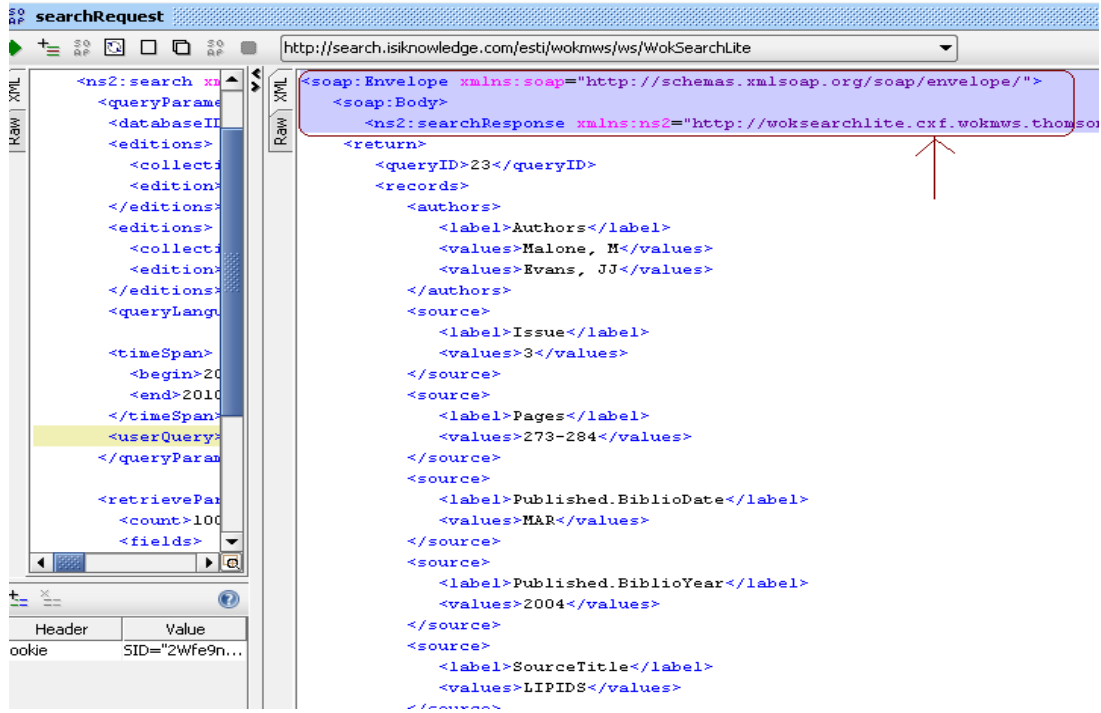
- Click **Green Triangle** (see the following illustration) to submit the request



- You will get search results (response from server) in response window on the right.



- Delete the first three tags and the last three tags (soap tag)



- Right click the space and save as "author first name_last name" in the correct folder on `W:\ScholarWorks\Summer2010\Web of Science XML Files`

Instruction for Search Request Configuration

1. The template soap request

```
<soap:Envelope xmlns:soap="http://schemas.xmlsoap.org/soap/envelope/">
  <soap:Header/>
  <soap:Body>
    <ns2:search xmlns:ns2="http://woksearchlite.cxf.wokmws.thomsonreuters.com">
      <queryParameters>
        <databaseID>WOS</databaseID>
        <editions>
          <collection>WOS</collection>
          <edition>SCI</edition>
        </editions>
```



```
<editions>
  <collection>WOS</collection>
  <edition>ISTP</edition>
</editions>
<queryLanguage>en</queryLanguage>

<timeSpan>
  <begin>1993-01-01</begin>
  <end>2007-12-31</end>
</timeSpan>
<userQuery> OG=Univ Massachusetts AND CI=Amherst AND AU=Malone, M*</userQuery>
</queryParameters>

<retrieveParameters>
  <count>100</count>
  <fields>
    <name>Date</name>
    <sort>D</sort>
  </fields>
  <firstRecord>1</firstRecord>
</retrieveParameters>

</ns2:search>
</soap:Body>
</soap:Envelope>
```

2. The query parameters section (where you can set up your search criteria)

See the “Query Parameters” table and “User Query” table in the Web Service Lite Guide

Mention several details of how to use “User Query”. Author name has to be last name, Initial of first name.

3. The retrieve parameters section (where you can set up how you want the result to display)

See the “Retrieve Parameters” table in the Web Service Lite Guide